



**\*\*BEAUTIFUL COPSE VIEW\*\***

This property is a wonderfully presented four bedroom detached family home situated within walking distance of Jennetts Park school, local shop and overlooking Tarman's Copse. The property has been extended to comprise of a lounge, Kitchen/family room and a light and airy dining/family room with bi-folding doors to the garden. The first floor comprises of three bedrooms and family bathroom while the second floor houses the master suite with shower room and dressing room. The rear garden is landscaped with seating and a decked area with access to the carport.

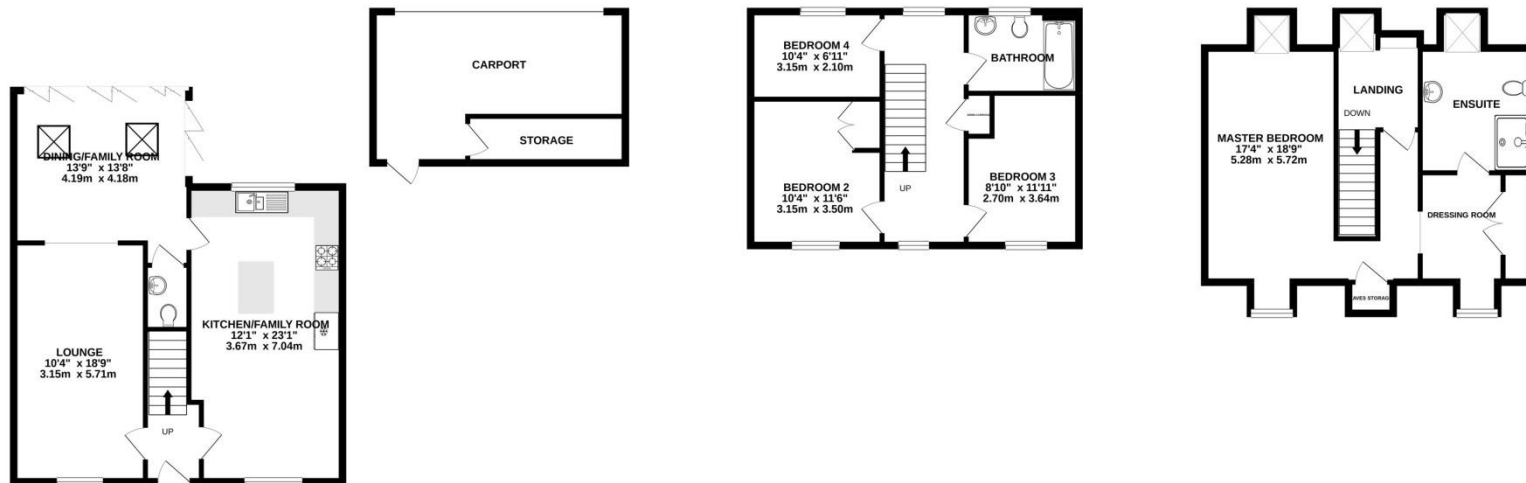


***\*\*BEAUTIFUL COPSE VIEW\*\*** This property is a wonderfully presented four bedroom family home situated within walking distance of Jennetts Park school, local shop and overlooking Tarman`s Copse. The property has been extended to comprise of a lounge, Kitchen/family room and a light and airy dining/family room.*



Jennett's Park is a suburb of Bracknell in the English county of Berkshire. It is a recent development with the first residents moving there in 2007. It is in Great Hollands North ward of Bracknell Forest Council. The main Jennett's Park development has two small plots that remain undeveloped at the moment - planning permission has been granted for flats, houses and a retail unit to be built next to the Co-op store whilst planning permission for a private children's nursery on the grassed area next to the Community Centre was refused in 2019 after a number of objections by residents.

- Four Bedrooms
- Detached
- Enclosed Carport
- Master Suite With Dressing Room
- Kitchen/Family Room
- Copse View
- landscaped Garden
- Dining/Family Room With Bi-folding Doors



EPC ratings: -

CTax band: Unk





#### Entrance

Doors to all rooms, stairs rising to first floor, storage cupboard, tiled flooring, radiator.

#### Living Room

Front elevation double glazed window, TV point, BT point, wood effect flooring, radiator.

#### Kitchen/Family Room

Dual aspect double glazed windows, a range of eye and base level units with rolled edge work surfaces, one and a half bowl stainless steel sink and drainer, electric double oven, four ring gas hob with extractor fan over, integrated dishwasher, space for fridge/freezer, space for washing machine, tiled flooring, radiator.

#### Family Dining Room

Rear aspect windows, rear elevation bifolding doors leading to garden, wood effect flooring.

#### Downstairs Cloakroom

Pedestal hand wash basin, low level WC, radiator.

#### First Floor Landing

Doors to all rooms, stairs rising to second floor, airing cupboard, radiator.

#### Bedroom Two

Front elevation double glazed window, built in double wardrobe with hanging space and shelving, radiator.

#### Bedroom Three

Front elevation double glazed window, radiator.

#### Bedroom Four

Rear elevation double glazed window, radiator.

#### Family Bathroom

Rear elevation double glazed frosted window, low level WC, pedestal hand wash basin, panel enclosed bath with mixer tap, tiled flooring, heated towel rail.

#### Second floor landing

Door to master, built in storage.

#### Master Bedroom

Dual aspect double glazed window, air conditioning, TV point, built in storage cupboard.

#### Dressing Room

Front elevation double glazed window, built in wardrobe with hanging space and shelving, radiator.

#### En-suite

Rear elevation double glazed window, double width shower cubicle with power shower, low level WC, pedestal hand wash basin, tiled flooring, radiator.

#### Outside

#### To the Front

Courtesy path to front door and side access.

#### To the Rear

A landscaped garden with decking area, seating area, borders with shrubs and plants and side access.

#### Garage

Double car port that benefits with power and light. The garage also has a built in storage room.



## appointment to view

date: ..... time: .....

viewing with...



owner: .....



sears agent: .....



## locate the property



scan with your  
smartphone  
or tablet for  
full property  
details



THESE PARTICULARS DO NOT CONSTITUTE ANY PART OF AN OFFER OR CONTRACT. ALL STATEMENTS IN THESE DETAILS ARE MADE WITHOUT LIABILITY ON THE PART OF SEARS PROPERTY OR THE SELLER.

THEY SHOULD NOT BE RELIED UPON AS A STATEMENT OR REPRESENTATION OF FACT AND, ALTHOUGH BELIEVED TO BE CORRECT, ARE NOT GUARANTEED AND FORM NO PART OF AN OFFER OR CONTRACT.

ANY INTENDING BUYERS MUST SATISFY THEMSELVES AS TO THEIR CORRECTNESS. PLEASE NOTE THAT ALL APPLIANCES AND HEATING SYSTEMS ARE NOT TESTED BY SEARS PROPERTY AND THEREFORE NO WARRANTIES CAN BE GIVEN AS TO THEIR GOOD WORKING ORDER.



## we're here to help

If you've any further questions, please speak to this property's dedicated agent directly:

Daniel Sear on 01344 481111



01344 481111



12 High Street, Bracknell, Berkshire RG12 1LL



searsproperty.co.uk



hello@searsproperty.co.uk



find sears property on facebook



@searsproperty

REGISTERED OFFICE: 73 HIGH STREET, ALDERSHOT, HAMPSHIRE, GU11 1BY. REGISTERED IN ENGLAND AND WALES NO. 07158638 VAT NO. 989485042



rightmove.co.uk



PrimeLocation.com

Zoopla.co.uk

sears  
select  
by sears property

