



**sears**  
property, clear & simple

4 Bedroom Semi Detached  
Falcon Way Jennetts Park  
Bracknell RG12 8DQ

**Price £430,000**

Freehold



*scan to view full details*



**\*\* A SPACIOUS HOME OFFERED IN EXCELLENT CONDITION\*\*** This spacious and well presented four bedroom town house is set in the popular Jennetts Park development and only moments away from Jennetts Park Primary School and Community Centre.

*helping you get a move on!*

## about the property...

**\*\* A SPACIOUS HOME OFFERED IN EXCELLENT CONDITION \*\*** This spacious and well presented four bedroom town house is set in the popular Jennetts Park development and only moments away from Jennetts Park Primary School and Community Centre. This ideal family home has plenty of play parks surrounding the area and offers excellent transport links via both M3 and M4 motorways. Features include:- living room, kitchen/dining room, downstairs cloakroom, En-Suite to the master bedroom, ample storage, private rear garden and two allocated parking spaces.

### Entrance Hall -

Front elevation double glazed front door, stairs to first floor, understairs storage cupboard, radiator, doors to all rooms.

### Downstairs Cloakroom -

Corner wash hand basin, low level WC, radiator, wood effect flooring.

### Kitchen/Dining Room - 16'2" (4.93m) x 9'2" (2.79m)

Front elevation double glazed bay window, a range of eye and base level units with rolled edge work surfaces to three walls, stainless steel one and a half bowl sink, four ring hob with extractor hood over, double oven, fridge/freezer, dishwasher, radiator, wood effect flooring.

### Living Room - 16'1" (4.9m) x 11'7" (3.53m)

Rear elevation double glazed windows and French doors leaving to rear garden, wood effect flooring, radiator.

### First Floor Landing -

Side elevation double glazed window, two storage cupboards, stairs to second floor landing.

### Bedroom Two - 13'8" (4.17m) x 9'1" (2.77m)

Rear elevation double glazed window, wood effect floor, radiator.

### Bedroom Three - 12'3" (3.73m) x 9'2" (2.79m)

Front elevation double glazed window, wood effect floor, radiator.

### Bedroom Four - 7'9" (2.36m) x 6'7" (2.01m)

Rear elevation double glazed window, wood effect floor, radiator.

### Family Bathroom -

Front elevation double glazed frosted window, panel enclosed bath Mira thermostatic shower over, pedestal wash hand basin, low level WC, tiled flooring, part tiled walls, heated towel rail.

### Second Floor Landing -

Door to master bedroom.

### Master Bedroom - 20'4" (6.2m) x 10'3" (3.12m)

Front elevation double glazed window, rear elevation Velux double glazed window, built in wardrobe, radiator, door to en-suite.

### En-Suite Shower -

Rear elevation double glazed frosted window, tiled shower cubicle, wood effect flooring, low level WC, pedestal wash hand basin, heated towel rail.

### Outside -

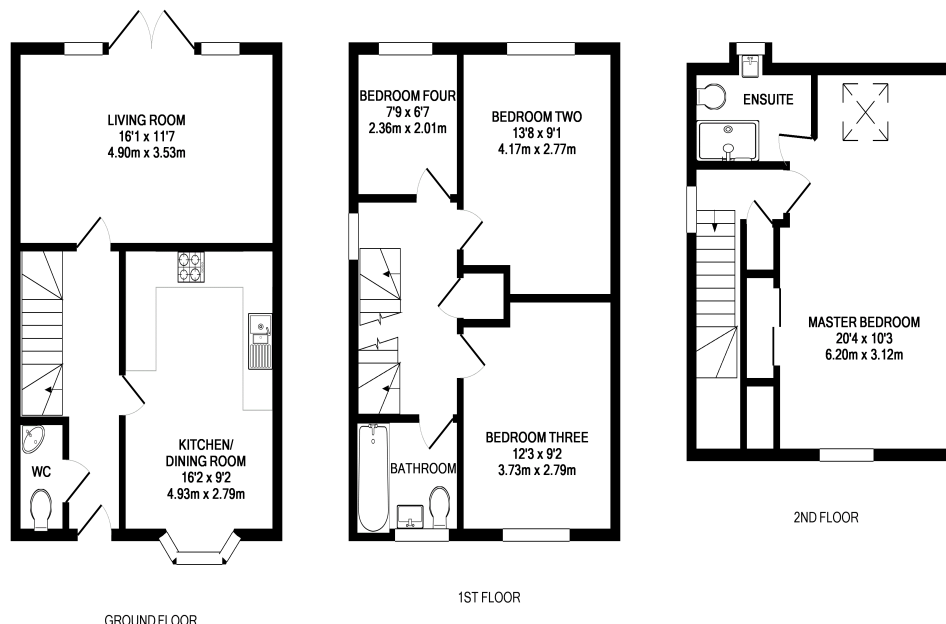
### To The Front -

Path to front door, shingle border.

### To The Rear -

Part paved patio, artificial lawn, fence and wall enclosed.

EPC Summary: EER B (85/94) EIR B (86/95)



**PLEASE NOTE** WE HAVE NOT TESTED ANY APPARATUS, FIXTURES, FITTINGS, OR SERVICES. INTERESTED PARTIES MUST UNDERTAKE THEIR OWN INVESTIGATION INTO THE WORKING ORDER OF THESE ITEMS. ALL MEASUREMENTS ARE APPROXIMATE AND PHOTOGRAPHS PROVIDED FOR GUIDANCE ONLY.

*we're here to help if you've any questions about this property...*

**01344 481111** **12 High Street, Bracknell, Berkshire RG12 1LL**

[hello@searsproperty.co.uk](mailto:hello@searsproperty.co.uk) find sears property on facebook [twitter.com/searsproperty](https://twitter.com/searsproperty)

REGISTERED OFFICE: 73 HIGH STREET, ALDERSHOT, HAMPSHIRE, GU11 1BY. REGISTERED IN ENGLAND AND WALES NO. 07158638 VAT NO. 989485042

rightmove.co.uk

PrimeLocation.com

Zoopla.co.uk