



sears
property, clear & simple

3 Bedroom Semi-Detached
Wokingham Road, Bracknell
Berkshire RG42 1PD

Price £325,000

Freehold



scan to view full details



**** NEWLY REFURBISHED **** A well presented and recently modernised three bedroom Semi-Detached house within walking distance of Bracknell Town Centre. The property benefits from three bedrooms with fitted wardrobes, re-fitted shower room with walk in shower, dining room and separate living room.

helping you get a move on!

about the property...

**** NEWLY REFURBISHED ****A well presented and recently modernised three bedroom Semi-Detached house within walking distance of Bracknell Town Centre. The property benefits from three bedrooms with fitted wardrobes, re-fitted shower room with walk in shower, dining room and separate living room, recently fitted kitchen with integrated appliances and a large conservatory. Externally the property offers an enclosed rear garden as well as driveway parking for two cars.

Entrance -

Stairs rising to first floor, under stairs storage cupboard, wood effect flooring.

Dining Room - 11'5" (3.48m) x 9'6" (2.9m)

Front elevation double glazed window, wood effect flooring radiator.

Living Room - 11'5" (3.48m) x 10'7" (3.23m)

Rear elevation double glazed patio door to conservatory, gas fire place, wood effect flooring.

Kitchen - 6'5" (1.96m) x 8'9" (2.67m)

Re fitted kitchen, double glazed door to garden, a range of eye and base level units with granite work surfaces, low level fridge, integrated oven, integrated microwave, electric hob, washing machine, tiled flooring.

Conservatory - 11'5" (3.48m) x 13'8" (4.17m)

Side elevation double glazed patio door.

First Floor Landing -

Doors to all first floor rooms, loft hatch.

Master Bedroom - 11'5" (3.48m) x 9'5" (2.87m)

Rear elevation double glazed window, fitted wardrobe with hanging space and shelving, radiator.

Bedroom Two - 11'5" (3.48m) x 10'8" (3.25m)

Front elevation double glazed window, fitted wardrobe with hanging space and shelving, radiator.

Bedroom Three - 7'5" (2.26m) x 7'3" (2.21m)

Front elevation double glazed window, single fitted wardrobe with hanging space and shelving, radiator.

Bathroom - 6'5" (1.96m) x 6'0" (1.83m)

Re fitted shower room, rear elevation double glazed frosted window, shower cubicle with attachment over, low level WC, wall mounted sink with mixer tap over, fully tiled walls, tiled flooring heated towel rail.

Outside -

Front -

Laid to shingle with courtesy path to front door, side access.

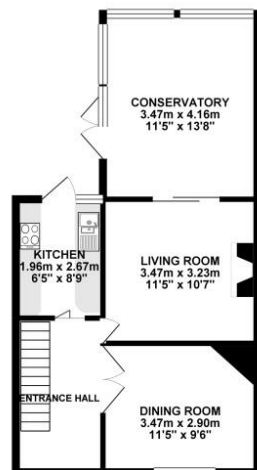
Rear -

A private and enclosed rear garden mostly laid to lawn.

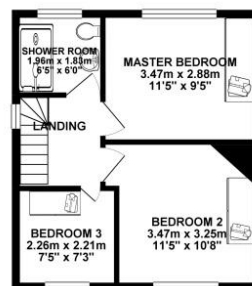
Parking -

Driveway parking for two vehicles.

GROUND FLOOR 47.73 sq. m.
(513.74 sq. ft.)



1ST FLOOR 33.27 sq. m.
(358.15 sq. ft.)



PLEASE NOTE WE HAVE NOT TESTED ANY APPARATUS, FIXTURES, FITTINGS, OR SERVICES. INTERESTED PARTIES MUST UNDERTAKE THEIR OWN INVESTIGATION INTO THE WORKING ORDER OF THESE ITEMS. ALL MEASUREMENTS ARE APPROXIMATE AND PHOTOGRAPHS PROVIDED FOR GUIDANCE ONLY.

we're here to help if you've any questions about this property...

01344 481111 **12 High Street, Bracknell, Berkshire RG12 1LL**

searsproperty.co.uk hello@searsproperty.co.uk [find sears property on facebook](https://www.facebook.com/findsearsproperty) twitter.com/searsproperty

REGISTERED OFFICE: 73 HIGH STREET, ALDERSHOT, HAMPSHIRE, GU11 1BY. REGISTERED IN ENGLAND AND WALES NO. 07158638 VAT NO. 989485042

rightmove.co.uk

PrimeLocation.com

Zoopla.co.uk