



**sears**  
property, clear & simple

4 Bedroom Terrace  
Jameston, Bracknell,  
Berkshire, RG12 7WZ

Price £325,000

Freehold



*scan to view full details*



**\*\* AN EXTENDED FAMILY HOME OFFERING FLEXIBLE LIVING SPACE \*\*** Set in the popular Birch Hill area and only moments from local amenities is this spacious and extended four bedroom family home. The property has the benefit of a downstairs fourth bedroom originally designed for someone with a disability

*helping you get a move on!*

## about the property...

**\*\* AN EXTENDED FAMILY HOME OFFERING FLEXIBLE LIVING SPACE \*\*** Set in the popular Birch Hill area and only moments from local amenities is this spacious and extended four bedroom family home. The property has the benefit of a downstairs fourth bedroom originally designed for someone with a disability that could be used as a study. Other features include:- 18ft full width conservatory, 21ft living/dining room, re-fitted kitchen, downstairs shower room, re-fitted upstairs shower room and an enclosed rear garden. The location offers excellent transport links via both M3 and M4 motorways and is within easy reach of popular places of interest such as 'Coral Reef' and 'The Lookout'.

### Entrance -

Doors to all ground floor rooms, stairs to first floor landing, radiator.

### Downstairs Shower Room -

Front elevation double glazed frosted window, low level WC, wall mounted sink, shower cubicle with attachment over, radiator.

### Living/Dining Room - 21'3" (6.48m) x 11'2" (3.4m)

Front elevation double glazed window, rear elevation double glazed patio doors leading to conservatory, TV point, radiator.

### Kitchen - 16'7" (5.05m) x 10'2" (3.1m)

Rear elevation double glazed window, a range of eye and base level units with rolled edge work surfaces, integrated oven and hob with extractor hood above, integrated fridge/freezer, stainless steel sink and drainer with mixer tap over, space and plumbing for washing machine, radiator.

### Conservatory - 18'0" (5.49m) x 12'8" (3.86m)

A full width conservatory with rear elevation French doors leading to the garden and electric powered window blinds.

### Bedroom Four/Study - 13'1" (3.99m) x 7'2" (2.18m)

Front elevation double glazed window, radiator.

### First Floor Landing -

Doors to all first floor rooms, airing cupboard.

### Master Bedroom - 11'5" (3.48m) x 10'9" (3.28m)

Front elevation double glazed window, built in storage cupboard, radiator.

### Bedroom Two - 13'5" (4.09m) x 10'0" (3.05m)

Rear elevation double glazed window, radiator.

### Bedroom Three - 15'7" (4.75m) x 6'2" (1.88m)

Front elevation double glazed window, radiator.

### Shower Room -

Rear elevation double glazed frosted window, low level WC, pedestal sink, shower cubicle with shower attachment over, tiled flooring, heated towel rail.

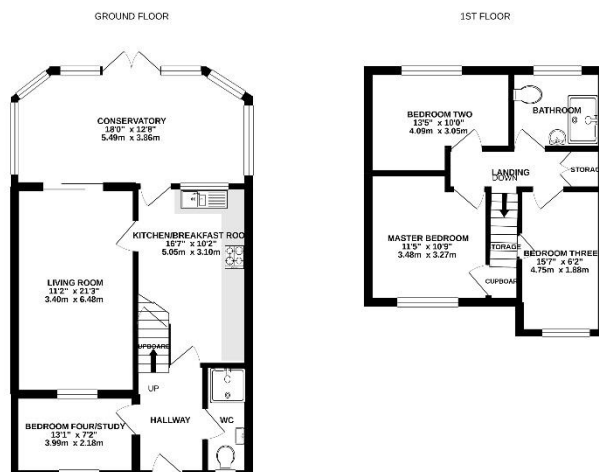
### Outside -

#### To The Front -

Laid to lawn, courtesy path leading to front door, picket fence surround.

#### To The Rear -

An enclosed rear garden laid mostly to patio with an area laid to decking.



**PLEASE NOTE** WE HAVE NOT TESTED ANY APPARATUS, FIXTURES, FITTINGS, OR SERVICES. INTERESTED PARTIES MUST UNDERTAKE THEIR OWN INVESTIGATION INTO THE WORKING ORDER OF THESE ITEMS. ALL MEASUREMENTS ARE APPROXIMATE AND PHOTOGRAPHS PROVIDED FOR GUIDANCE ONLY.

*we're here to help if you've any questions about this property...*

**01344 481111** **12 High Street, Bracknell, Berkshire RG12 1LL**

[searsproperty.co.uk](http://searsproperty.co.uk)

[hello@searsproperty.co.uk](mailto:hello@searsproperty.co.uk)

find sears property on facebook

[twitter.com/searsproperty](https://twitter.com/searsproperty)

rightmove.co.uk

PrimeLocation.com

Zoopla.co.uk