



sears
property, clear & simple

3 bedrooms
End Terrace
Merryhill Road Bracknell
Berkshire RG42 2DP

Price £365,000

Freehold



scan to view full details



**** EXTENDED FAMILY HOME **** A very impressive three bedroom end of terrace family home. Over the years the property has been extended and upgraded to provide a very comfortable lifestyle. This particular property has a light and airy feel to it.

helping you get a move on!

about the property...

**** EXTENDED FAMILY HOME **** A very impressive three bedroom end of terrace family home. Over the years the property has been extended and upgraded to provide a very comfortable lifestyle. This particular property has a light and airy feel to it, mainly due to the large kitchen diner space with Bi-Folding doors leading out onto the South facing garden. In the living room you will find further access onto the garden along with a feature inset log burner. Upstairs there are three bedrooms of good proportions along with a fully upgraded family bathroom with Jacuzzi. Outside the rear garden is of a very private nature and benefits from side access, to the front you will find a private driveway with parking for two/three vehicles. Situated in the highly desirable area of Priestwood and located only a stones throw away from the newly regenerated Bracknell town centre and the nearby Braybrook Park.

Entrance -

Stairs rising to first floor, wood effect flooring, radiator.

Living Room - 19'4" (5.89m) x 10'6" (3.2m)

Front elevation double glazed window, rear elevation double glazed sliding doors to garden, TV point, BT point, built in log burner, wood effect flooring, radiator.

Kitchen/Diner - 19'2" (5.84m) x 12'11" (3.94m)

Rear elevation double glazed bifold doors to garden, side elevation double glazed window, a range of eye and base level units with rolled edge work surfaces, built in four ring hob with extractor fan over, built in high level double oven, inset sink and drainer, space for dish washer, space for washing machine, dining area, tiled flooring, radiator.

Utility Room - 10'10" (3.3m) x 5'8" (1.73m)

Front elevation double glazed window, space for upright fridge/freezer, built in under stairs storage cupboard, tiled flooring, radiator.

First Floor Landing -

Doors to all rooms, Loft hatch, built in airing cupboard.

Master Bedroom - 13'9" (4.19m) x 10'9" (3.28m)

Front elevation double glazed window, radiator.

Bedroom Two - 14'8" (4.47m) x 10'7" (3.23m)

Rear elevation double glazed window, radiator.

Bedroom Three - 10'9" (3.28m) x 9'1" (2.77m)

Front elevation double glazed window, built in over stairs storage cupboard, radiator.

Bathroom -

Two rear elevation double glazed frosted windows, low level WC, built in hand wash basin, jacuzzi panel enclosed bath with shower attachment over, tiled flooring, fully tiled walls, heated towel rail.

Outside -

To the Front -

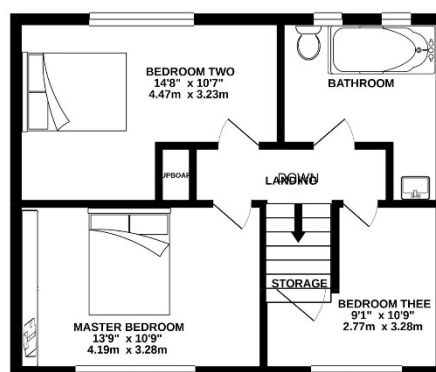
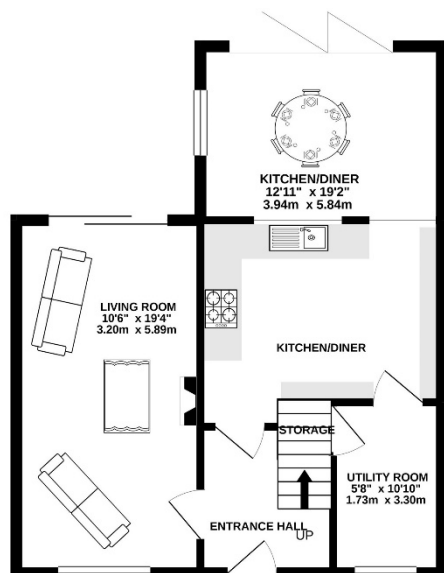
Courtesy path to front door with mature flower bed border

To the Rear -

A private enclosed mainly laid to lawn garden with patio area and side gate.

Parking -

Parking available for two to three vehicles.



PLEASE NOTE WE HAVE NOT TESTED ANY APPARATUS, FIXTURES, FITTINGS, OR SERVICES. INTERESTED PARTIES MUST UNDERTAKE THEIR OWN INVESTIGATION INTO THE WORKING ORDER OF THESE ITEMS. ALL MEASUREMENTS ARE APPROXIMATE AND PHOTOGRAPHS PROVIDED FOR GUIDANCE ONLY.

we're here to help if you've any questions about this property...

01344 481111  **12 High Street, Bracknell, Berkshire RG12 1LL**

 searsproperty.co.uk

 hello@searsproperty.co.uk

 find sears property on facebook

 twitter.com/searsproperty

 rightmove.co.uk

 PrimeLocation.com

 Zoopla.co.uk