



sears
property, clear & simple

3 Bedroom Terrace
Lingwood, Bracknell,
Berkshire RG12 7PW

Price £315,000

Freehold



scan to view full details



**** MORE THAN MEETS THE EYE **** An incredibly deceptive three bedroom family home, from the front you wouldn't be able to tell how much space there truly is. Internally the property boasts a very generous sized living room, large entrance porch with w.c along with a large kitchen diner.

helping you get a move on!

about the property...

**** MORE THAN MEETS THE EYE **** An incredibly deceptive three bedroom family home, from the front you wouldn't be able to tell how much space there truly is. Internally the property boasts a very generous sized living room, large entrance porch with w.c along with a large kitchen diner with access to both front and rear garden spaces. Upstairs there are three good size bedrooms with the master in particular being very large. There is also a fully modernised bathroom and an extensive amount of storage. Situated down a walkway and tucked away near a green makes it and incredibly private location. There is the added benefit of a garage in a block. Outside there are both front and rear gardens along with further storage,

Entrance -

Front elevation double glazed window, doors to all rooms, wood effect flooring, radiator.

Downstairs Cloakroom -

Side elevation double glazed frosted window, low level WC, built in hand wash basin, tiled flooring.

Living Room - 17'8" (5.38m) x 12'0" (3.66m)

Front elevation double glazed window, rear elevation double glazed double doors to garden, feature electric fireplace, built in storage cupboard, TV point, BT point, wood effect flooring, radiator.

Kitchen/Diner - 18'8" (5.69m) x 9'7" (2.92m)

Front elevation double glazed window, front elevation double glazed doors to courtyard, rear elevation double glazed window, rear elevation double glazed window, rear elevation double glazed doors to garden, a range of eye and base level units with rolled edge work surfaces, inset stainless steel sink and drainer, built in four ring hob with oven and extractor fan over, space for washing machine, space for upright fridge/freezer, integrated dish washer, wood effect flooring, stairs rising to first floor, built in storage cupboard, radiator.

First Floor Landing -

Built in storage cupboard, built in airing cupboard, radiator.

Master Bedroom - 15'6" (4.72m) x 8'6" (2.59m)

Front elevation double glazed window, built in wardrobe with hanging space and shelving, wood effect flooring, TV point.

Bedroom Two - 12'8" (3.86m) x 9'2" (2.79m)

Front elevation double glazed window, built in storage cupboard, wood effect flooring.

Bedroom Three - 12'6" (3.81m) x 6'0" (1.83m)

Front elevation double glazed window, wood effect flooring.

Family Bathroom -

Velux window, low level WC, built in hand wash basin, panel enclosed bath, fully tiled walls, heated towel rail.

Outside -

To the Front -

Courtesy path to front door and storage room.

Front Courtyard -

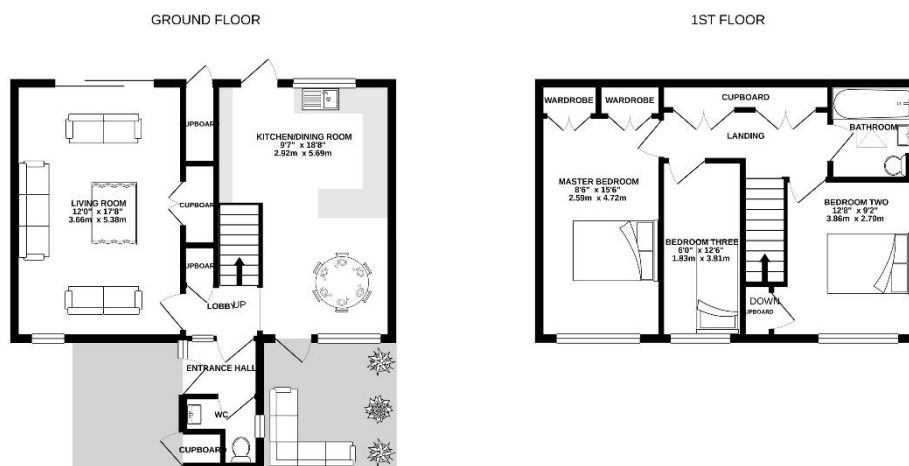
Patio and seating area.

To the Rear -

Mainly laid to lawn private rear garden with patio area.

Garage -

Garage in a block.



PLEASE NOTE WE HAVE NOT TESTED ANY APPARATUS, FIXTURES, FITTINGS, OR SERVICES. INTERESTED PARTIES MUST UNDERTAKE THEIR OWN INVESTIGATION INTO THE WORKING ORDER OF THESE ITEMS. ALL MEASUREMENTS ARE APPROXIMATE AND PHOTOGRAPHS PROVIDED FOR GUIDANCE ONLY.

we're here to help if you've any questions about this property...

01344 481111 12 High Street, Bracknell, Berkshire RG12 1LL

searsproperty.co.uk

hello@searsproperty.co.uk

find sears property on facebook

twitter.com/searsproperty

rightmove.co.uk

PrimeLocation.com

Zoopla.co.uk