



sears
property, clear & simple

6 Bedroom Terrace
Fountains Garth, Bracknell,
Berkshire RG12 7RH

Price £365,000

Freehold



scan to view full details



**** FULLY LICENSED HMO **** Conveniently located close to Bracknell Town Centre and mainline train station is the well presented six bedroom HMO. The property is fully licensed, set up to current standards and has a potential rental income of circa £3200 per calendar month. There are currently tenants.

helping you get a move on!

about the property...

**** FULLY LICENSED HMO **** Conveniently located close to Bracknell Town Centre and mainline train station is the well presented six bedroom HMO. The property is fully licensed, set up to current standards and has a potential rental income of circa £3200 per calendar month. There are currently tenants in situ making it an great opportunity for any investment buyer. No onward chain.

Entrance Hall -

Doors to all ground floor rooms, stairs to first floor, understairs storage cupboard.

Cloakroom -

Side elevation frosted window, low level WC, wall mounted sink with twin taps over.

Kitchen - 8'7" (2.62m) x 8'6" (2.59m)

Front elevation double glazed window, a range of eye and base level units with rolled edge work surfaces, space for oven, space and plumbing for washing machine, further appliance space, stainless steel sink with drainer and twin taps over, wood effect flooring.

Master Bedroom - 17'8" (5.38m) x 9'11" (3.02m)

Dual elevation double glazed windows, radiator.

Bedroom Three - 9'11" (3.02m) x 8'7" (2.62m)

Double glazed door to garden, rear elevation double glazed window.

First Floor Landing -

Doors to bedrooms and bathroom, access to loft, airing cupboard housing hot water tank.

Bedroom Two - 17'7" (5.36m) x 8'9" (2.67m)

Dual elevation double glazed windows.

Bedroom Four - 10'11" (3.33m) x 8'0" (2.44m)

Side elevation double glazed window, wall to wall wardrobes with hanging space and shelving.

Bedroom Five - 10'8" (3.25m) x 7'5" (2.26m)

Front elevation double glazed window, radiator.

Bedroom Six - 10'1" (3.07m) x 6'9" (2.06m)

Rear elevation double glazed window, single wardrobe with hanging space and shelving.

Family Bathroom -

Front elevation double glazed frosted window, panel enclosed bath with electric shower over, low level WC, pedestal sink with mixer tap, vinyl flooring, part tiled walls, heated towel rail.

Outside -

Reception Room - 20'5" (6.22m) x 7'8" (2.34m)

Rear elevation double glazed window, a range of eye and base level units with rolled edge work surfaces, stainless steel sink and drainer with mixer tap, space for tumble dryer, wood effect flooring, radiator.

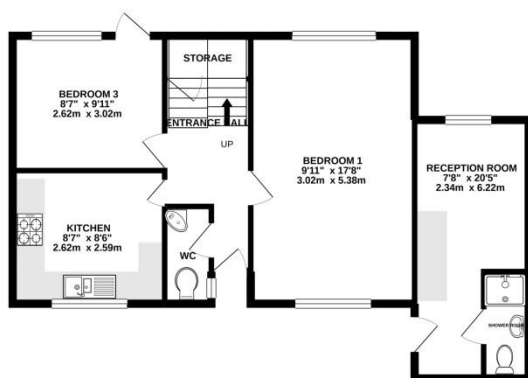
Shower Room -

Low level WC, vanity unit with mixer tap, shower cubicle with shower attachment over, fully tiled walls, tiled flooring.

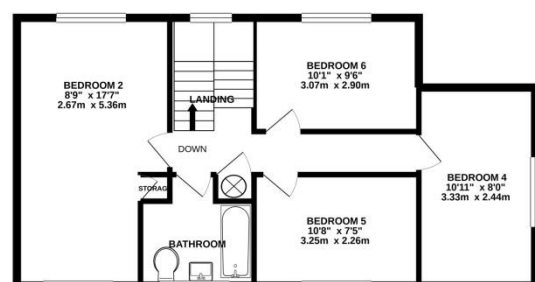
To The Front -

Area laid to patio slabs with further area laid to lawn, flower bed borders housing a selection of plants and shrubs, outside storage cupboard.

GROUND FLOOR



1ST FLOOR



PLEASE NOTE WE HAVE NOT TESTED ANY APPARATUS, FIXTURES, FITTINGS, OR SERVICES. INTERESTED PARTIES MUST UNDERTAKE THEIR OWN INVESTIGATION INTO THE WORKING ORDER OF THESE ITEMS. ALL MEASUREMENTS ARE APPROXIMATE AND PHOTOGRAPHS PROVIDED FOR GUIDANCE ONLY.

we're here to help if you've any questions about this property...

01344 481111 **12 High Street, Bracknell, Berkshire RG12 1LL**

searsproperty.co.uk

hello@searsproperty.co.uk

find sears property on facebook

twitter.com/searsproperty

rightmove.co.uk

PrimeLocation.com

Zoopla.co.uk