



sears
property, clear & simple

2 Bedroom Semi-Detached
Clive Green, Bracknell,
Berkshire, RG12 7JT

Price £300,000

Freehold



scan to view full details



**** A SEMI DETACHED HOME CLOSE TO AMENITIES **** This spacious and well presented two double bedroom semi detached family home has been recently redecorated by the current owners and is set in a small cul de sac in the Easthampstead area only moments away from local shops, schools and amenities.

helping you get a move on!

about the property...

**** A SEMI DETACHED HOME CLOSE TO AMENITIES **** This spacious and well presented two double bedroom semi detached family home has been recently redecorated by the current owners and is set in a small cul de sac in the Easthampstead area only moments away from local shops, schools and amenities. There are excellent transport links via both M3 and M4 motorways while the popular South Hill Park is just a short walk. Features and benefits include:- 19ft living room, 12ft kitchen, re-fitted bathroom, ample storage and a private and enclosed rear garden with utility shed.

Entrance -

Doors to all ground floor rooms, stairs to first floor, wood effect flooring, radiator.

Living Room - 19'4" (5.89m) x 10'8" (3.25m)

Front elevation double glazed window, rear elevation double glazed patio doors, feature fireplace, TV point, BT point, wood effect flooring, radiator.

Kitchen - 12'1" (3.68m) x 7'5" (2.26m)

Rear elevation double glazed window, side elevation door, a range of eye and base level units with rolled edge work surfaces, stainless steel sink with drainer and mixer tap over, space for oven with extractor hood above, space and plumbing for washing machine, larder style storage cupboard, part tiled walls, tiled flooring, radiator.

First Floor Landing -

Side elevation double glazed window, doors to all first floor rooms.

Master Bedroom - 14'2" (4.32m) x 10'7" (3.23m)

Twin front elevation double glazed windows, fitted wardrobe with hanging space and shelving, TV point, radiator.

Bedroom Two - 10'7" (3.23m) x 10'5" (3.18m)

Rear elevation double glazed window, airing cupboard with shelving,

radiator.

Bathroom -

Rear elevation double glazed frosted window, low level WC, pedestal sink with mixer tap over, panel enclosed bath with mixer tap and shower attachment over, part tiled walls, heated towel rail.

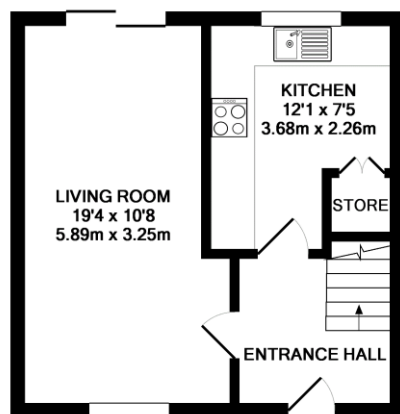
Outside -

To The Front -

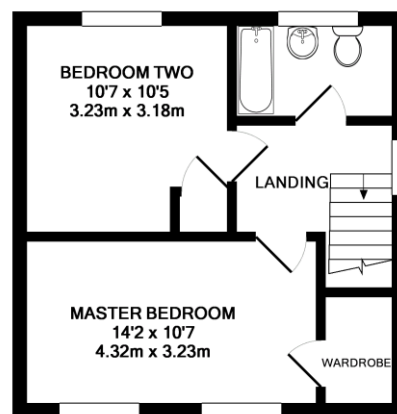
Mostly laid to lawn, courtesy path to front door, hedge borders.

To The Rear -

A private and enclosed rear garden laid mostly to lawn with an area laid to patio, a large storage/utility cupboard with light and power, further storage cupboard and gated side access.



GROUND FLOOR



1ST FLOOR

Made with Metropix ©2017

PLEASE NOTE WE HAVE NOT TESTED ANY APPARATUS, FIXTURES, FITTINGS, OR SERVICES. INTERESTED PARTIES MUST UNDERTAKE THEIR OWN INVESTIGATION INTO THE WORKING ORDER OF THESE ITEMS. ALL MEASUREMENTS ARE APPROXIMATE AND PHOTOGRAPHS PROVIDED FOR GUIDANCE ONLY.

we're here to help if you've any questions about this property...

 **01344 481111**  **12 High Street, Bracknell, Berkshire RG12 1LL**

 searsproperty.co.uk  hello@searsproperty.co.uk  find sears property on facebook  twitter.com/searsproperty

REGISTERED OFFICE: 73 HIGH STREET, ALDERSHOT, HAMPSHIRE, GU11 1BY. REGISTERED IN ENGLAND AND WALES NO. 07158638 VAT NO. 989485042

 rightmove.co.uk

 PrimeLocation.com

 Zoopla.co.uk