



**sears**  
property, clear & simple

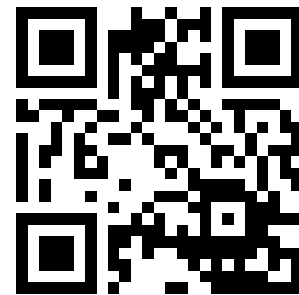
1 Bedroom Maisonette  
Oldstead, Crown Wood,  
Bracknell, Berkshire RG12 0UE

Price £800 pcm

To Let



*scan to view full details*



**\*\* CROWN WOOD \*\*** Located on the sought after residential development of Crown Wood is this immaculately presented one double bedroom first floor maisonette. Available from 14th August on an unfurnished basis.

*helping you get a move on!*

## about the property...

**\*\* CROWN WOOD \*\*** Located on the sought after residential development of Crown Wood is this immaculately presented one double bedroom first floor maisonette. The property offers spacious accommodation to include:- 17ft lounge/dining room, re-fitted kitchen, re-fitted bathroom, 17ft bedroom, double glazing and gas central heating. Available 14th August on an unfurnished basis.

**Entrance Hall -**  
Stairs to first floor.

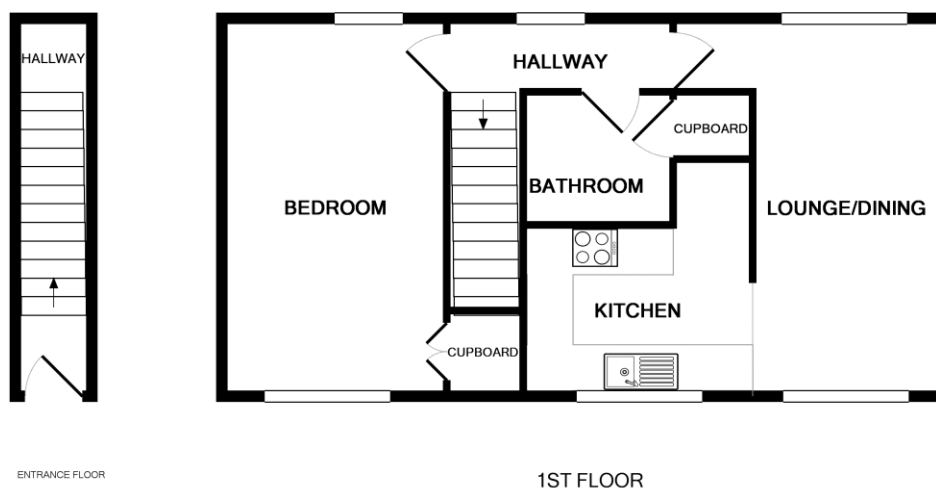
**First Floor Landing -**  
Doors to all rooms, rear elevation double glazed window.

**Lounge/Dining Room - 17'0" (5.18m) x 9'11" (3.02m)**  
Duel elevation double glazed windows, cupboard housing wall mounted boiler, laminate flooring, radiator, TV point.

**Re-Fitted Kitchen - 8'9" (2.67m) x 7'10" (2.39m)**  
Front elevation double glazed window, a range of eye and base level units with rolled edge work surfaces, stainless steel sink with drainer and mixer tap over, integrated Bosch oven with hob above, vinyl flooring, part tiled walls.

**Bedroom - 17'0" (5.18m) x 8'9" (2.67m)**  
Duel elevation double glazed windows, large walk in wardrobe with hanging space and shelving, further storage cupboard, radiator.

**Re-Fitted Bathroom -**  
Panel enclosed bath with mixer tap and shower attachment over, low level WC, wall mounted sink with twin taps over, storage cupboard, vinyl flooring, part tiled walls.



**PLEASE NOTE** WE HAVE NOT TESTED ANY APPARATUS, FIXTURES, FITTINGS, OR SERVICES. INTERESTED PARTIES MUST UNDERTAKE THEIR OWN INVESTIGATION INTO THE WORKING ORDER OF THESE ITEMS. ALL MEASUREMENTS ARE APPROXIMATE AND PHOTOGRAPHS PROVIDED FOR GUIDANCE ONLY.

*we're here to help if you've any questions about this property...*

 **01344 481111**  **12 High Street, Bracknell, Berkshire RG12 1LL**

 [searsproperty.co.uk](http://searsproperty.co.uk)

 [hello@searsproperty.co.uk](mailto:hello@searsproperty.co.uk)

 find sears property on facebook

 [twitter.com/searsproperty](https://twitter.com/searsproperty)

 [rightmove.co.uk](http://rightmove.co.uk)

 [PrimeLocation.com](http://PrimeLocation.com)

 [Zoopla.co.uk](http://Zoopla.co.uk)